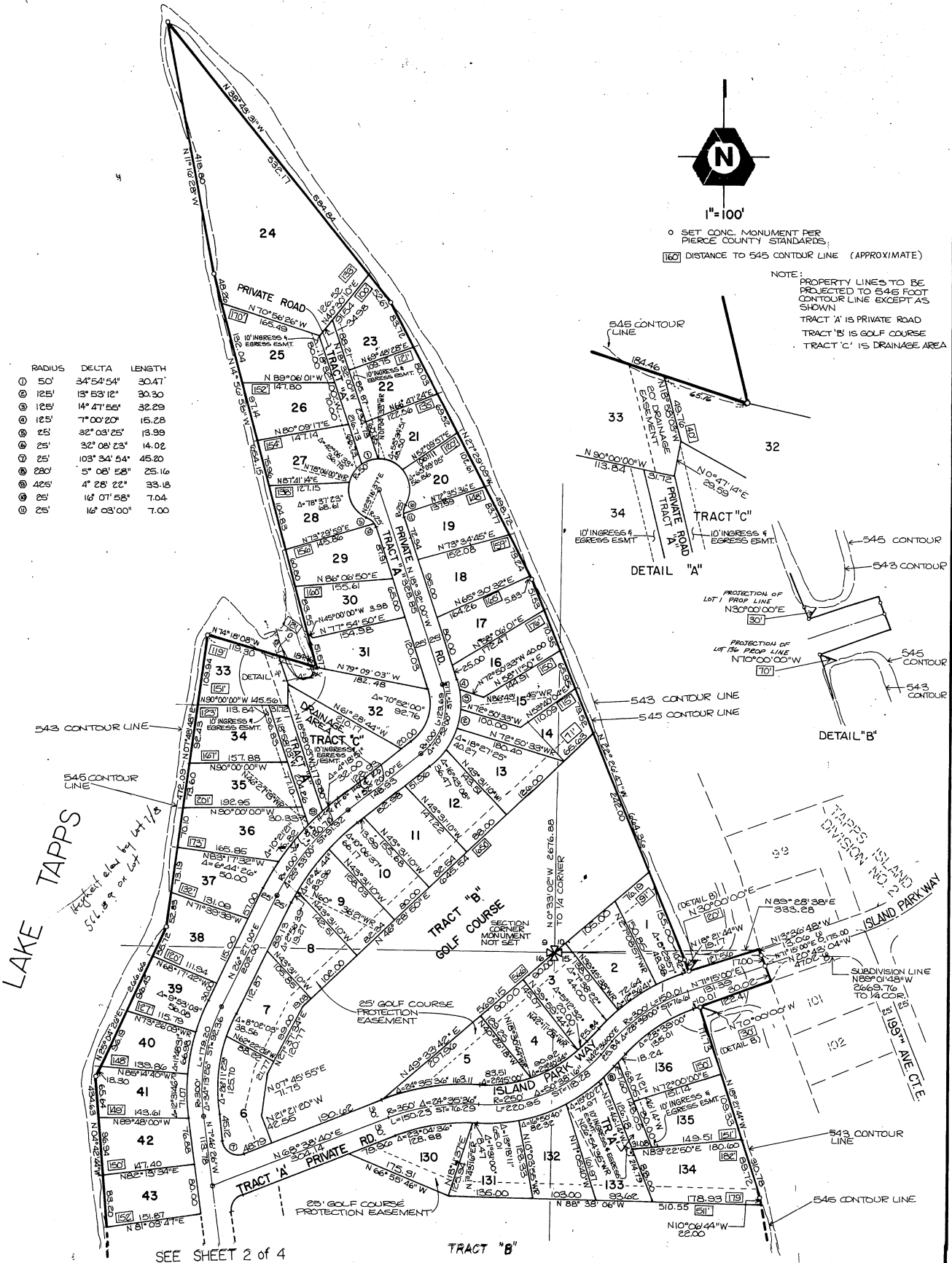


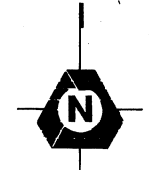
TAPPS ISLAND DIVISION NO. 3

SECTIONS 9, 10, 15, 16; T.20N., RGE.5E. W.M.

PIERCE COUNTY, WASHINGTON



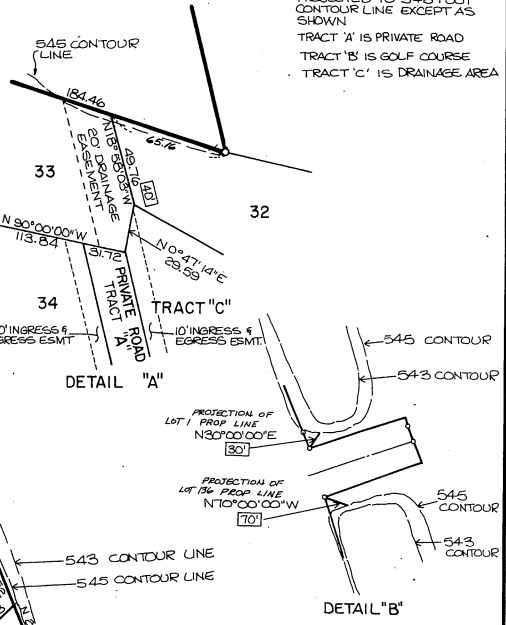
RADIUS	DELTA	LENGTH
1 50'	34° 54' 54"	30.47'
2 125'	13° 53' 12"	30.30'
3 125'	14° 47' 55"	32.29'
4 125'	7° 00' 20"	15.28'
5 25'	32° 03' 23"	13.99'
6 25'	32° 08' 23"	14.02'
7 25'	103° 34' 54"	45.20'
8 280'	5° 08' 58"	25.16'
9 425'	4° 28' 22"	33.18'
10 25'	16° 07' 58"	7.04'
11 25'	16° 03' 00"	7.00'



1" = 100'

○ SET CONC. MONUMENT PER PIERCE COUNTY STANDARDS.
 [160] DISTANCE TO 545 CONTOUR LINE (APPROXIMATE)

NOTE:
 PROPERTY LINES TO BE PROJECTED TO 54.6 FOOT CONTOUR LINE EXCEPT AS SHOWN
 TRACT 'A' IS PRIVATE ROAD
 TRACT 'B' IS GOLF COURSE
 TRACT 'C' IS DRAINAGE AREA



LAKE TAPPS
 Height elev. by 147 1/8
 54.89 ± on left

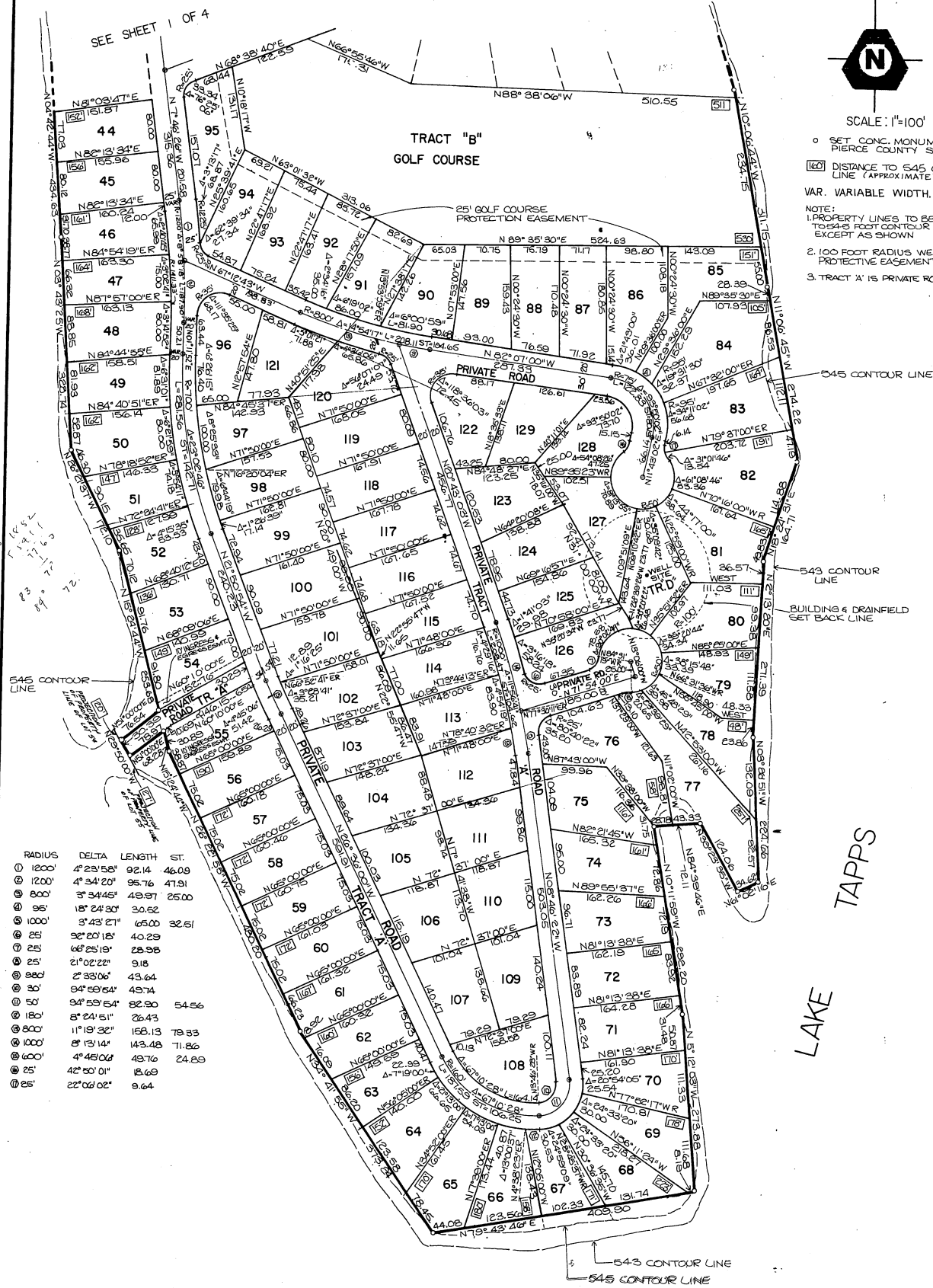
SEE SHEET 2 of 4

TRACT "B"

TAPPS ISLAND DIVISION NO. 3

SECTIONS 9, 10, 15, 16; T.20N, RGE.5E. W.M.

PIERCE COUNTY, WASHINGTON



SCALE: 1"=100'

○ SET CONC. MONUMENT PER PIERCE COUNTY STANDARDS

①② DISTANCE TO 545' CONTOUR LINE (APPROXIMATE)

VAR. VARIABLE WIDTH.

NOTE:
1. PROPERTY LINES TO BE PROJECTED TO 545 FOOT CONTOUR LINE EXCEPT AS SHOWN

2. 100 FOOT RADIUS WELL SITE PROTECTIVE EASEMENT

3. TRACT 'A' IS PRIVATE ROAD

RADIUS	DELTA	LENGTH	ST.
① 1200'	4° 23' 58"	92.14	46.09
② 1200'	4° 34' 20"	95.76	47.91
③ 800'	3° 34' 45"	49.97	25.00
④ 95'	18° 24' 30"	30.62	
⑤ 1000'	3° 43' 27"	65.00	32.51
⑥ 25'	92° 20' 18"	40.29	
⑦ 25'	68° 25' 19"	28.58	
⑧ 25'	21° 02' 22"	9.18	
⑨ 800'	2° 33' 06"	43.64	
⑩ 30'	94° 59' 54"	49.74	
⑪ 50'	94° 59' 54"	82.90	54.56
⑫ 180'	8° 24' 51"	26.43	
⑬ 800'	11° 19' 32"	168.13	79.33
⑭ 1000'	8° 13' 14"	143.48	71.86
⑮ 600'	4° 48' 00"	49.76	24.89
⑯ 25'	42° 50' 01"	13.69	
⑰ 25'	22° 06' 02"	9.64	

LAKE TAPPS